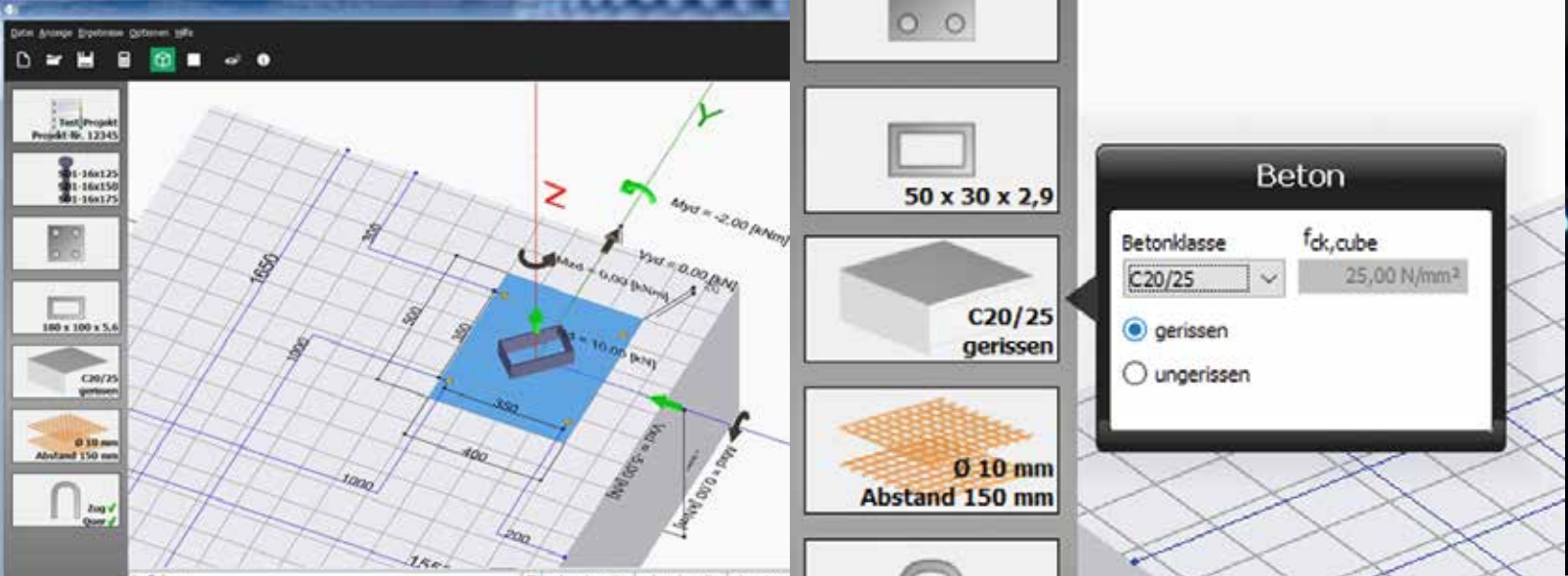




SDdesign

DESIGN SOFTWARE FOR STEEL MOUNTING HARDWARE WITH WELDED SB SHEAR CONNECTORS



EASY, INTUITIVE USABILITY

SDdesign IS A STATE-OF-THE-ART SOFTWARE APPLICATION FOR DESIGNING SHEAR CONNECTORS FOR STEEL MOUNTING HARDWARE IN CONCRETE (CEN TS 1992-4: 2009, PARTS 1 AND 2; ETA 11/0120).

IT EXCELS ESPECIALLY BY AN EASY, INTUITIVE USER INTERFACE, MODERN DESIGN AND CONVENIENT OUTPUT OPTIONS.

DIMENSIONING OF SINGLE CONNECTORS OR GROUPS

- » groups consisting of two to nine connectors and welded on steel anchor plates
- » in uncracked and cracked concrete (all concrete strength classes from C20/25 to C50/60 as well as custom definition)

SELECTED CONNECTORS ARE DISPLAYED GRAPHICALLY AND WITH ALL RELEVANT INFORMATION

- » material, length, shaft diameter, head diameter, head thickness, minimum edge distance, minimum axis distance

EXISTING REINFORCEMENT AND SUPPLEMENTARY REINFORCEMENT CAN BE CONSIDERED

ANY STRESS COMBINATIONS CAN BE APPLIED TO THE ANCHOR PLATE

- » characteristic loads (with dynamic load component) or design loads
- » with or without welded profile for load application
- » common profile types are stored in the program

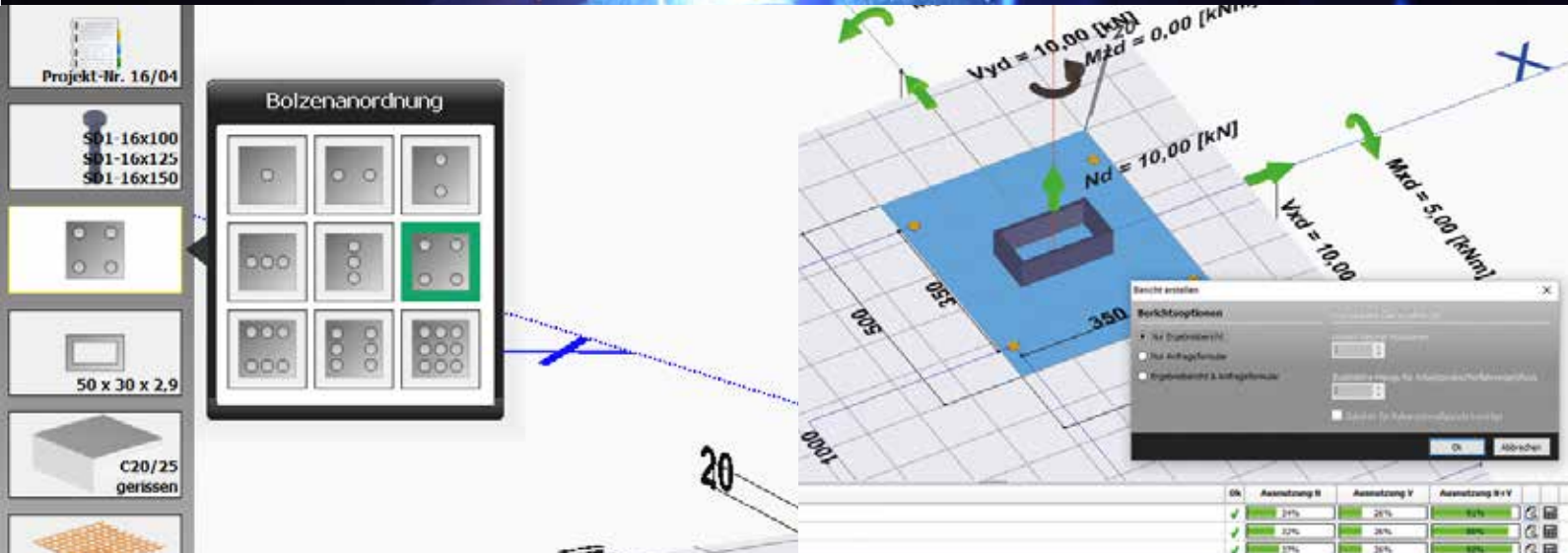
SIMULTANEOUS ANALYSIS AND DESIGN AND/OR VERIFICATION OF BOUNDARY CONDITIONS TO BE MET IS POSSIBLE

- » amongst others geometry: edge and axis distances
- » for different shear connectors (type, diameter and length)

THE DESIGN OF THE STEEL ANCHOR PLATE CAN BE CARRIED OUT USING A FINITE ELEMENT PROGRAM

CONVENIENT OUTPUT OPTIONS

BOLTE



CLEAR RESULTS TABLE WITH STATUS DISPLAY

- » options to start the reporting or order form creation
- » option to report the anchor plate design for the selected shear connectors

VERIFIABLE RESULTS PRINTOUT (REPORT)

- » showing all significant inputs as well as all individual information

ORDER FORM FOR THE CALCULATED PROJECT INCL. ADDITIONAL ORDERING OPTIONS

- » connectors and anchor plates
- » work samples, accessories, etc.

EASY OPERATION THROUGH CLEAR STRUCTURING OF USER INPUTS IN INPUT GROUPS, CAN BE MODIFIED IN ANY ORDER

BASED ON MODERN "METRO-STYLE DESIGN"

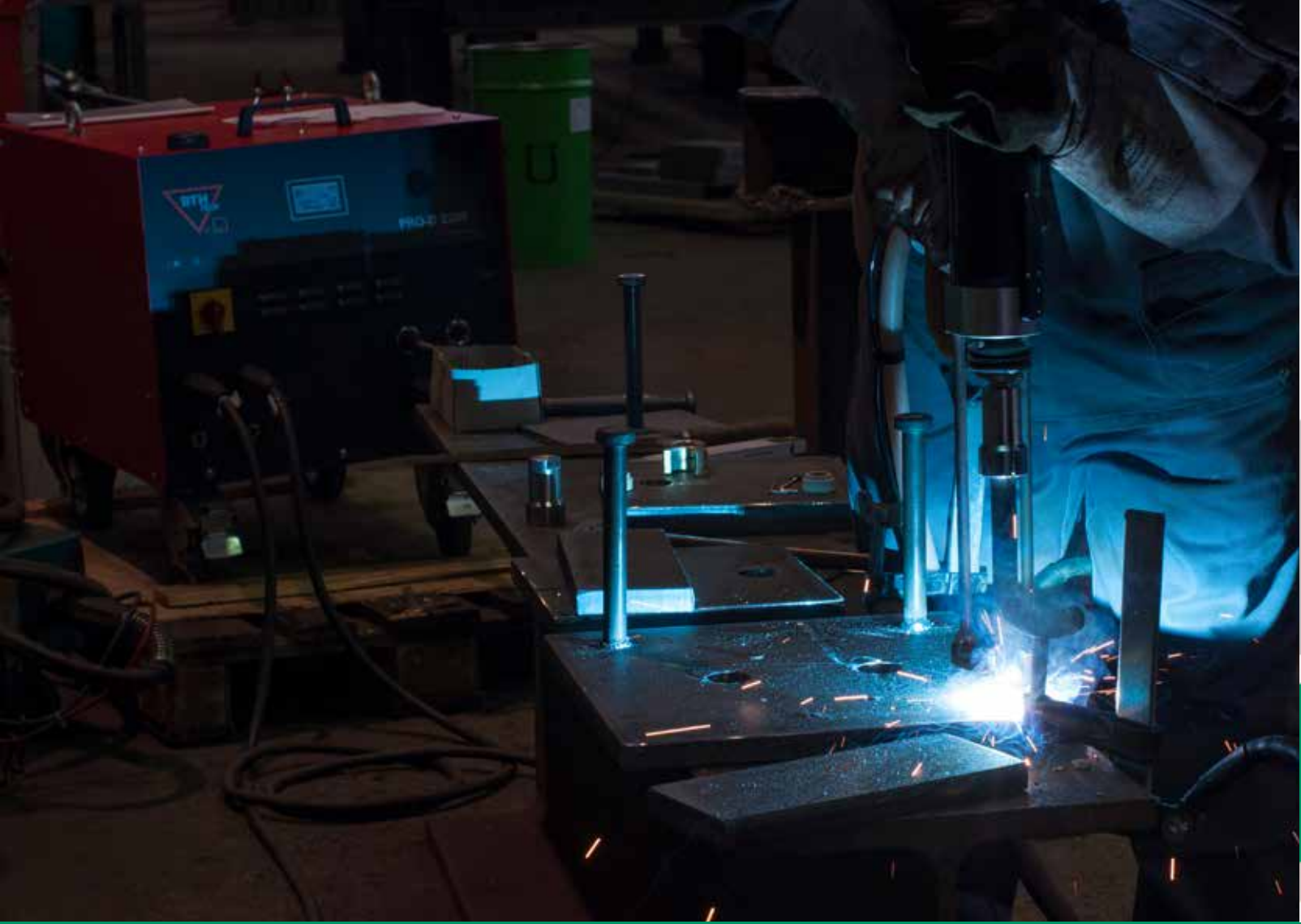
- » true-to-scale 3D graphics with interactive input options (dimensions and loads; also controllable via tabs)
- » self-explanatory tiles for the main user input groups
- » simple and clearly visible buttons in the toolbar
- » tool tips for each visual software component of the user interface

USER-DEFINED PROGRAM OPTIONS

- » multi-language, automatic online updates, user data

SDdesign can be downloaded under sddesign.bolte.gmbh for free.





Bolte GmbH

Flurstraße 25
D-58285 Gevelsberg

Tel.: +49 (0)2332 55106-0
Fax: +49 (0)2332 55106-11

Ohmstraße 3
D-85221 Dachau

Tel.: +49 (0)8131 5159-0
Fax: +49 (0)8131 5159-11

E-Mail: info@bolte.gmbh



www.bolte.gmbh